



acoustically  
functional  
aesthetically  
appealing

SILENT WALL® PANELS  
BAFFLES  
CEILING INSERTS  
TACK SURFACES  
BULLETIN BOARDS  
CUSTOM WALL TREATMENTS  
SIGNAGE PANELS  
PARTITION INSERTS

**MPC** inc.®

835 Canterbury Road, Westlake, Ohio 44145 Telephone 440-835-1405 • Fax: 440-835-9313

Website: [mpcsilentwall.com](http://mpcsilentwall.com)



Noise Control Products Division

**Silent Wall® Products**

- Acoustical Panels
- Baffles
- Tackboards
- Custom Products

**Imagination**

MPC should be your choice when the design calls for that "little something extra". The products shown here represent a small sample of the unlimited design possibilities that we can provide for you and your clients.

**Design**

MPC manufactures a wide range of products designed to reduce indoor noise pollution.

These products are acoustically functional and aesthetically appealing. They can be designed in any architectural or interior style.

Let our specialists assist you in analyzing the acoustical control needs of your project and in designing a superior noise control solution that unifies function and form.

**Function**

Sound absorption is the primary function of Silent Wall® Noise Control Panels and Baffles.

**Tackboards** are also easily fabricated using Silent Wall® Panels. They are totally fabric covered with no exposed framing and blend well with our acoustical panels to provide dual function wall treatment. Custom designed, special application bulletin boards are also available.

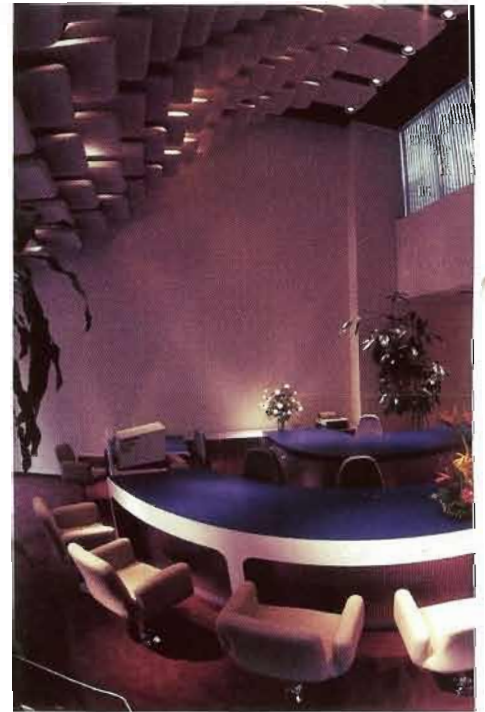
**Wall decoration** is another function of the Silent Wall® panels from the ceiling or structure. These panels let you create "information secure" environments - without permanent wall construction.

**Baffles** are used to control sound in open areas such as corridors, gymnasiums and open plan offices. These Silent Wall® panels can also be used as directional signage in institutional settings.

Telephone 440-835-1405  
Fax 440-835-9313



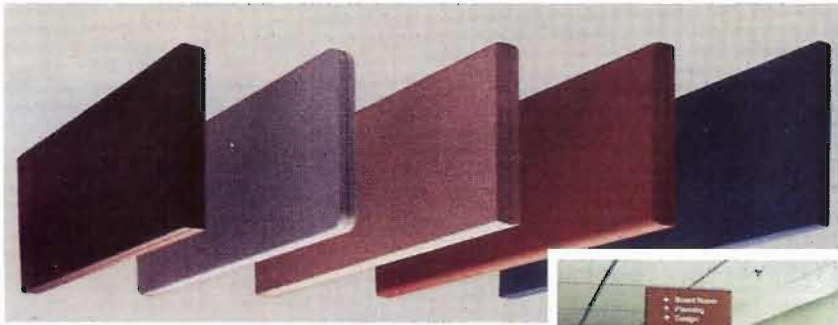
**Silent Wall® Panels** are installed on the ceiling and walls of this gymnasium. They help control high noise levels during activity periods and athletic events. Silent Wall® panels allow this room to be a true multi-purpose facility for plays, programs and other school events. Panels are suspended directly from the structure and can be removed for repairs, cleaning or modification.



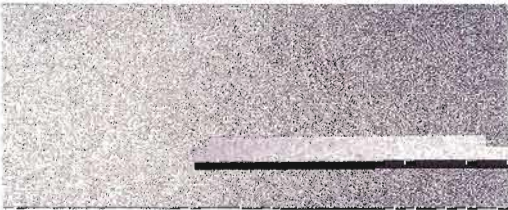
Ceiling decoration is a key attribute of the **Silent Wall® Ceiling** products. These horizontally oriented panels are an integral part of the visual and functional design of this space and they contribute to the total architectural solution. We offer a wide range of shapes, colors and sizes to meet your requirements.



**Movable Silent Wall® Panels** slide horizontally on tracks mounted above the credenza to reveal the porcelain on steel writing surface. These movable panels blend perfectly with the other **Silent Wall®** panels used in this office



### Custom Tackboards by MPC...



Top View

The tackboards used with modular office systems are often blocked by a maze of cables for task lighting, communications, computer and electrical power. MPC can furnish **Custom Tack Surfaces** with fully fabric tailored special recessed edges, notches or shimmed areas to accommodate this hard to manage wiring. This custom solution provides a clean functional appearance to today's automated workstations. Call our specialists for additional information.



**Acoustical Baffles and Signage** are made to your specifications. They work in public circulation spaces, auditoriums, gymnasiums, open classrooms as well as office areas to reduce unwanted noise, improve speech privacy and provide wayfinding.

Baffles are the perfect compliment to today's modular office partition systems. They control unwanted noise from office equipment and improve speech privacy exactly where needed. Baffles can be installed without major construction or revisions to modular office panel layouts. They hang from the ceiling and can fit into a fabric wrapped channel for a custom installation in office spaces.



**Silent Wall® Panels** installed on the walls make Teleconference Centers look and sound their best.



**Silent Wall® Panels** in this school's auditorium control noise and reverberation. Assemblies, plays and band concerts all sound great to the audience. The **Silent Wall®** panels also add a decorative design element within a reasonable budget.

### Silent Wall® Ceilings

products are featured above the desk in this executive office. Custom Wall Panels with silk screen designs provide the perfect aesthetic compliment to the design.



### acoustically functional...aesthetically appealing

**Silent Wall® Panels and Tackboards** are available in standard sizes from 6" x 6" to 60" x 144" in 1/8" increments.

Larger sizes can be furnished but must be reviewed by our design department.

*Edge Treatments are available as shown:*

Square, Beveled, Chamfered, Bullnose, Custom...

*Corner Treatments:*

Square, Radiused, Custom...

*Standard Thickness*

- Acoustical panels: 1/2", 3/4", 1 1/4", 2 1/4"
- Tackboards: 1/2", 3/4"
- Baffles: 1 1/2", 2", 2 1/2"



All products also available in custom thicknesses — call MPC for options

## MPC Product Specifications

### Part 1 - Manufacturer

- 1.1 Material shall be supplied by MPC, Inc., 835 Canterbury Road, Westlake, Ohio 44145  
Tel: 440-835-1405  
Fax: 440-835-9313

### Part 2 - Products

#### 2.1 Silent Wall® Acoustical Panels

*select model, Core Type, Corner Shape*

Model	Thickness	Edge
<input type="checkbox"/> SW50	1/2"	Square
<input type="checkbox"/> SW75	3/4"	Square
<input type="checkbox"/> SW100	1-1/4"	Square
<input type="checkbox"/> SW500	1-1/4"	Bullnose
<input type="checkbox"/> SW600	1-1/4"	Beveled
<input type="checkbox"/> SW200	2-1/4"	Square
<input type="checkbox"/> SWC	Custom	Custom

For Acoustical / Tackable add "CT2" to model number.

#### 2.2 Tackboards / Bulletin Boards

*select model, Core Type, Corner Shape*

Model	Thickness	Edge
<input type="checkbox"/> TB50	1/2"	Square
<input type="checkbox"/> TB300	3/4"	Square
<input type="checkbox"/> TB500	3/4"	Bullnose
<input type="checkbox"/> TB600	3/4"	Beveled
<input type="checkbox"/> TBC	Custom: Call MPC for options	

#### 2.3 Acoustical Baffles

*select model, Corner Shape. All models use Core type CT1.*

Model	Thickness	Edge
<input type="checkbox"/> NBET	1-1/2"	Square
<input type="checkbox"/> NBE2	2"	Square
<input type="checkbox"/> B100	1-1/2"	Square
<input type="checkbox"/> B500	2-1/2"	Square
<input type="checkbox"/> HF	Horizontal floats use SW models with eyelets	
<input type="checkbox"/> BC	Custom: Call MPC for options	

#### 2.4 Quilted Ceiling Inserts

- Custom: Call MPC for options

#### 2.5 Partition Inserts

- Custom: Call MPC for options

#### 2.6 Core Type

- CT1 6 lb./cu. ft. semi-rigid fiberglass  
 CT2 Acoustical/tackable core  
 CT3 1/8" High Impact Core Overlays  
 CT4 Tackable Mineral Board Core  
 CTFR Fire Rated Tackable Mineral Board Core  
 CM C Custom: Call MPC for options.

#### 2.7 Edge Type

- SQ Square  
 BN Bullnose  
 BV Beveled  
 CH Chamfered  
 EXWF Exterior Wood Frame/Trim  
 EXFC Exterior frame Custom See DWG. \_\_\_\_\_

#### 2.8 Corner Shapes

- CSSQ Square  
 CSR 1-1/2" Radius  
 CSC Custom: Call MPC for options

- 2.9 **Inner Frames:** Shall be extruded 6063-T5 aluminum alloy, mechanically secured in corners with steel clip assembly.

- 2.10 **Decorative Surface Material:** Shall be stretched free of wrinkles and sags; bonded only to edges and back of panel inner frame; free of adhesive or other foreign matter.

Panel shall be wrapped in manufacturer's standard fire rated 100% polyester, Micro-perforated Vinyl or Customer's Own Fabric as specified.

- 2.12 **Edges:** Shall be square and parallel and finished to within  $\pm 1/16"$  of given dimension.

- 2.13 **Corners:** Edges of fabric at Square Corners shall be tailored and thermally fused to prevent unravelling or gaps. Edges of fabric at Radius Corners shall not show seams or gathering of material.

- 2.14 **Patterns:** Directional or matched design fabrics shall be plumb and straight with panel to match wall elevations on the architect's drawings.

- 2.15 **Panel Sizes:** Standard sizes range from 6" x 6" to 60" x 144" in 1/16" increments. Larger sizes and custom shapes are available: call MPC to review requirements.

Panel Size: \_\_\_\_\_ x \_\_\_\_\_ or shaped per Drawing \_\_\_\_\_ showing required MPC product.

### Part 3 - Fire Ratings

- 3.1 Panel core and face material shall have a Class "A" Flame Spread Rating per ASTM E-84 Surface Burning Characteristics test.
- 3.2 Standard test is used solely to measure and describe the properties of products in response to heat and flame in controlled laboratory conditions.
- 3.3 The numerical Flame Spread Rating is not intended to reflect hazards presented by this or any other material.
- 3.4 Tackable Panel Core is available with Class "A" fire-rating. Specify as CTFR-Fire Rated Tackable Mineral Board Core.
- 3.5 Test Data for non-standard fabric materials or special core materials shall be furnished by their suppliers to MPC, Inc. for submittal, review and approval by the contractor and architect.

### Part 4 - Acoustical Data

- 4.1 Acoustical panels shall have a minimum Noise Reduction Coefficient (NRC) value of .75 to 1.00.
- 4.2 Test results shall be from an independent nationally recognized laboratory; products shall be tested in accordance with ASTM C423-66.
- 4.3 All test data shall be available upon request and/or furnished with submittals as specified.

### Part 5 - Installation

- 5.1 All products shall be furnished factory finished and ready for installation.
- 5.2 Panels shall be protective wrapped at the factory and crated for shipment. Panels shall be stored at the job site in a dry, protected area until installation.
- 5.3 Installation shall not occur until all wet work is done and a temperature of 60 to 80 degrees F is being maintained with normal humidity range.
- 5.4 For occupied facilities, installation can take place during normal business hours with little, if any, disruption to normal activities.

#### 5.5 Attachment Methods

*Call MPC to determine optimum mounting method(s) before specifying*

- AM1 Z-Clip Kit  
 AM2 Z-Clip Top/Velcro Tab Bottom  
 AM3 Magnetic Tape  
 AM4 Magnetic tape w/"L" Clips  
 AM5 "L" Support Clip Kit  
 AM6 Velcro Kit  
 AM7 Velcro Kit w/"L" Clips  
 AM8 Verticle Threaded Baffle Eyelets  
 AM9 Horizontal Baffle Eyelet Kit  
 AMC Custom: Call MPC for option

### Part 6 - Warranty

- 6.1 All product workmanship and materials shall be guaranteed free of defects by the manufacturer for a period of two year from the date of delivery.

**All specifications are subject to change by the manufacturer without notice.**

Call or fax MPC for  
**PRODUCT SAMPLES**  
 and our  
**MPC Reference Binder with**

- All Fabric Cards
- Vinyl Selection Cards
- Technical data
- Product Detail Drawings



835 Canterbury Road Tel.: 440-835-1405  
 Westlake, Ohio • 44145 Fax: 440-835-9313  
 Website: mpcsilentwall.com